



IPG Automotive GmbH
Bannwaldallee 60
76185 Karlsruhe
Tel.: +49 721 98520 0
E-mail: press@ipg-automotive.com

Press release

IPG Automotive Releases Version 11.0 of the CarMaker Product Family

The extended range of applications of the simulation software offers new functionalities for virtual test driving

Karlsruhe, March 28, 2022 – At the annual meeting point of the virtual test driving industry Open House, IPG Automotive provided insights into the latest CarMaker release. In addition to more powerful parallelization and more realistic sensor models, the simulation solution offers additional functions for the photo-realistic visualization tool MovieNX from March 30. It also enables easy modeling complex traffic situations and offers optimized support for industry standards such as OpenSCENARIO and OpenDRIVE.

Over 500 attendees joined IPG Automotive's Open House online livestream on March 22 for insights on the new CarMaker release 11.0. The simulation solution has been enhanced with functions in the areas of parallelization and visualization. CarMaker 11 now offers five highly detailed, photo-realistic MovieNX example scenarios as well. Furthermore, the visualization tool now supports color coloring, animated 3D objects such as pedestrians and new models for camera lenses. New driver markers and control algorithms enable the implementation of individual traffic and right-of-way rules for all autonomous traffic objects in the simulation and simplify the generation of complex scenarios. To further reduce the hardware load, the scenario can be designed in such a way that traffic is only animated in a radius around the ego vehicle. CarMaker 11 also provides the user with an open, programmable user interface



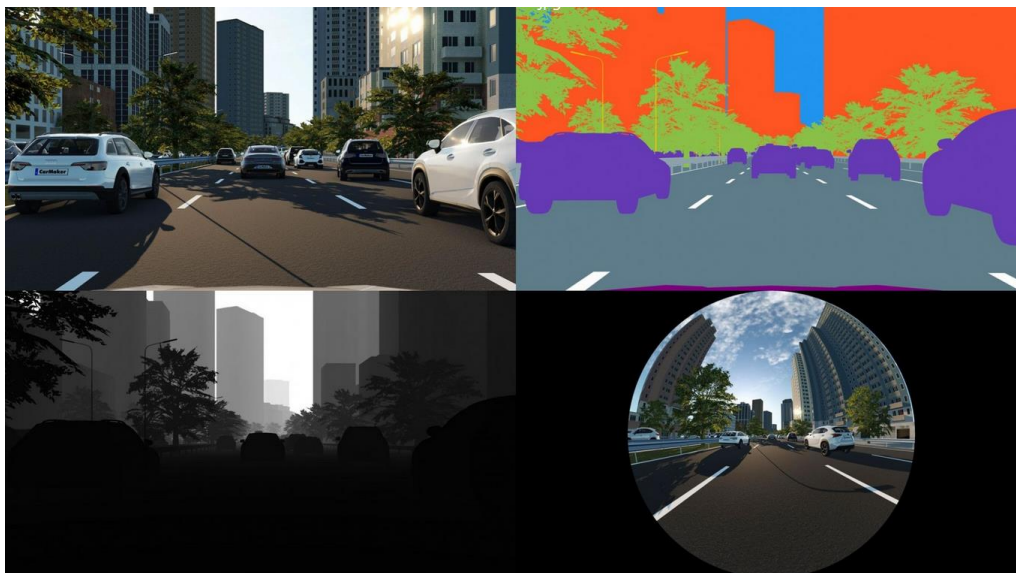
for signal processing of the raw signal interface sensors, which are now also extended by detections based on texture.

A new test scenario in the Test Ware Package NCAP supports the development and validation of door control and warning systems. The new Instrument Designer allows to design instrument dashboards more comprehensively, for example to visualize measured values. In addition, the new SensInject platform offers the possibility to inject camera data with 4K and higher resolutions, as well as data from radar or lidar sources. With ESP Compact HIL, real and virtual vehicle ECUs can be connected to a complete simulation environment.

2.362 characters (incl. spaces)

Image

[CarMaker_11.0]



CarMaker 11.0 offers new color modes and lenses. Clockwise from top left corner: Photo-realistic scenario, representation of objects, fisheye lens and representation of distances.

Image: IPG Automotive GmbH



About IPG Automotive GmbH

As a global leader in virtual test driving technology, IPG Automotive develops innovative simulation solutions for vehicle development. Designed for seamless use, the software and hardware products can be applied throughout the entire development process, from proof-of-concept to validation and release. The company's virtual prototyping technology facilitates the automotive systems engineering approach, allowing users to develop, test and validate new systems in a virtual whole vehicle.

IPG Automotive is an expert in the field of virtual development methods for the application areas of Autonomous Vehicles, ADAS, Powertrain and Vehicle Dynamics, committed to providing support to master the growing complexity in these domains. Together with its international clients and partners, the company is pioneering simulation technology that is increasing the efficiency of development processes.

By taking real test driving into the virtual world as a complement to on-road testing, IPG Automotive contributes significantly to technical progress and shares in shaping the mobility of tomorrow with regard to comfort, safety, economic efficiency and environmental friendliness.

In addition to the company headquarters in Karlsruhe, Germany, IPG Automotive provides innovative development services to its customers and partners at the Germany-based offices in Braunschweig, Frankfurt, Stuttgart and Munich as well as in China, France, Japan, Korea, Sweden, the UK and the USA.

Further information at www.ipg-automotive.com/en/press

Press contact

Carmen Nussbächer
IPG Automotive GmbH
Bannwaldallee 60
76185 Karlsruhe
Tel.: +49 721 98520 206
Fax: +49 721 98520 99

E-mail: press@ipg-automotive.com
www.ipg-automotive.com/en/press